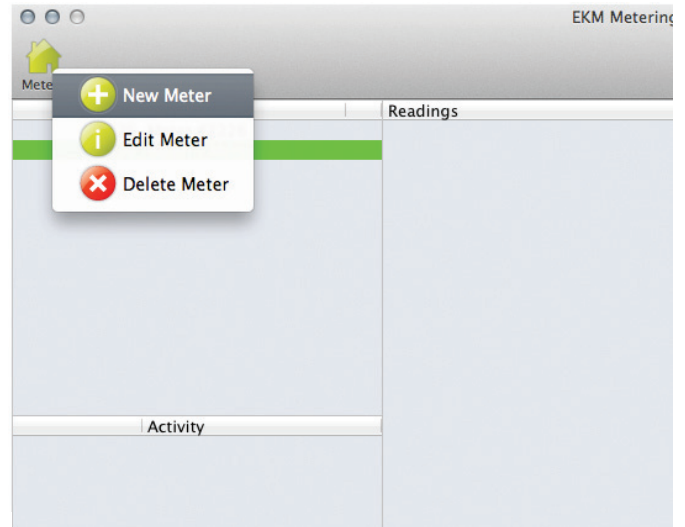


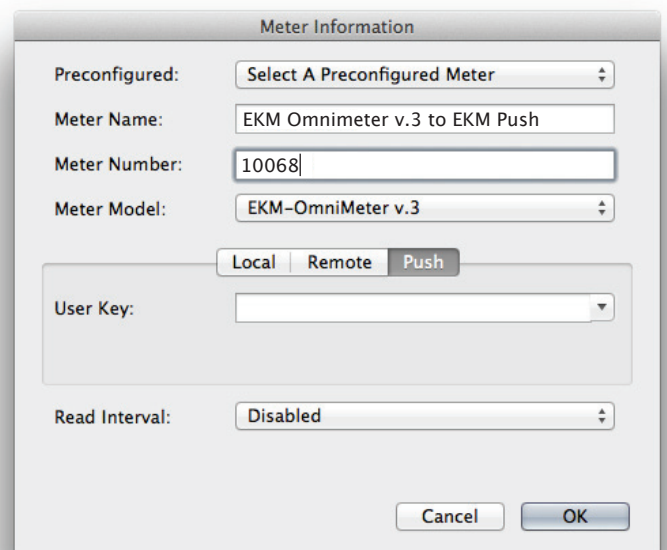
How to add an Omnimeter v.3 and EKM Push to the EKM Dash:

- 1.) Open your EKM Dash.
- 2.) Click the Meters button in the upper left corner of the Dash.
- 3.) Click "New Meter" at the top of list of options. (fig. 1)



(fig. 1)

- 4.) Make sure that the **EKM-Omnimeter v.3** is selected as your meter model. (fig. 2)
- 5.) Name your meter. (fig. 2)
- 6.) Enter your meter number. (fig. 2)



(fig. 2)

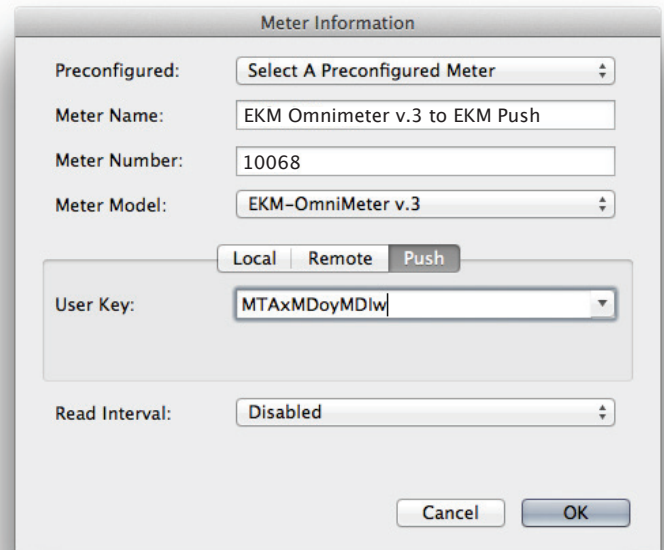
7.) Select the "Push" tab. (fig. 3)

8.) Enter your EKM Push User Key that was sent to you via email when you purchased your EKM Push. (fig. 3)

Or if you do not have an EKM Push you can try to use this demo account:

Demo EKM Omnimeter Number: **10068**

Demo EKM Push User Key: **MTAxMDoyMDlw**



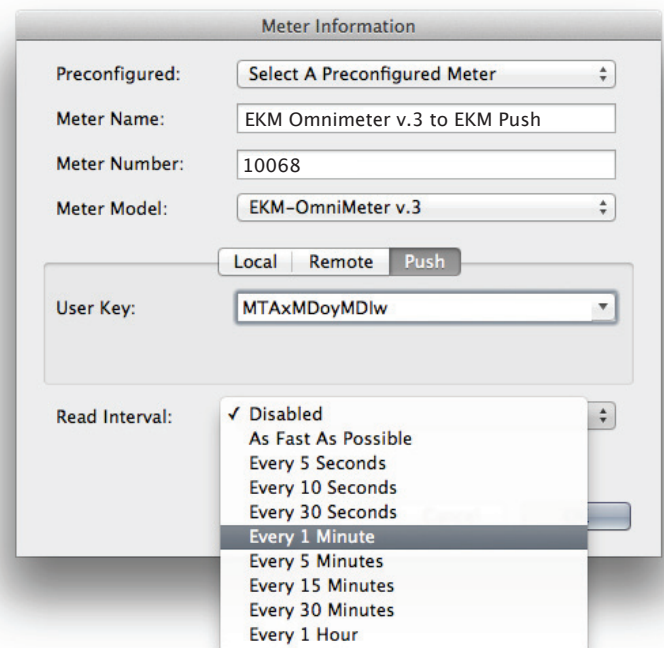
The screenshot shows a dialog box titled "Meter Information". It contains several fields: "Preconfigured:" with a dropdown menu set to "Select A Preconfigured Meter"; "Meter Name:" with the text "EKM Omnimeter v.3 to EKM Push"; "Meter Number:" with the text "10068"; "Meter Model:" with a dropdown menu set to "EKM-OmniMeter v.3". Below these fields are three tabs: "Local", "Remote", and "Push", with "Push" being the active tab. Under the "Push" tab, there is a "User Key:" field with a dropdown menu containing the text "MTAxMDoyMDlw". At the bottom, there is a "Read Interval:" field with a dropdown menu set to "Disabled". "Cancel" and "OK" buttons are located at the bottom right of the dialog.

(fig. 3)

9.) Select a read interval. This is set to "Every 1 minute" maximum read rate by default. (fig. 4)

10.) Click "OK"

You can now use the EKM Dash to pull in EKM Push data. With this data you can create .csv files (graphs, spreadsheets, and spot trends), you can send emails that include the meter data, send live data to wattvision, store an unlimited number of reads on your local machine, and learn to create your own applications.



This screenshot is similar to the previous one, but the "Read Interval:" dropdown menu is open, showing a list of options: "Disabled" (which has a checkmark), "As Fast As Possible", "Every 5 Seconds", "Every 10 Seconds", "Every 30 Seconds", "Every 1 Minute" (which is highlighted), "Every 5 Minutes", "Every 15 Minutes", "Every 30 Minutes", and "Every 1 Hour".

(fig. 4)

For more information about the EKM Dash software visit: <http://www.ekmmetering.com/ekmdash>
For more information about the EKM Push system visit: <http://www.ekmmetering.com/push-communications>