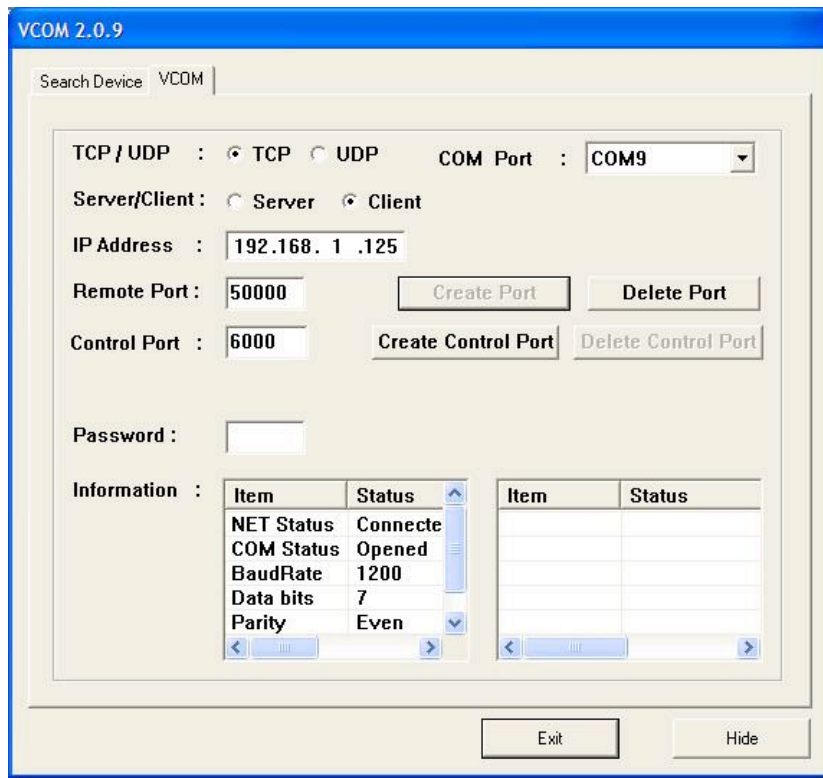


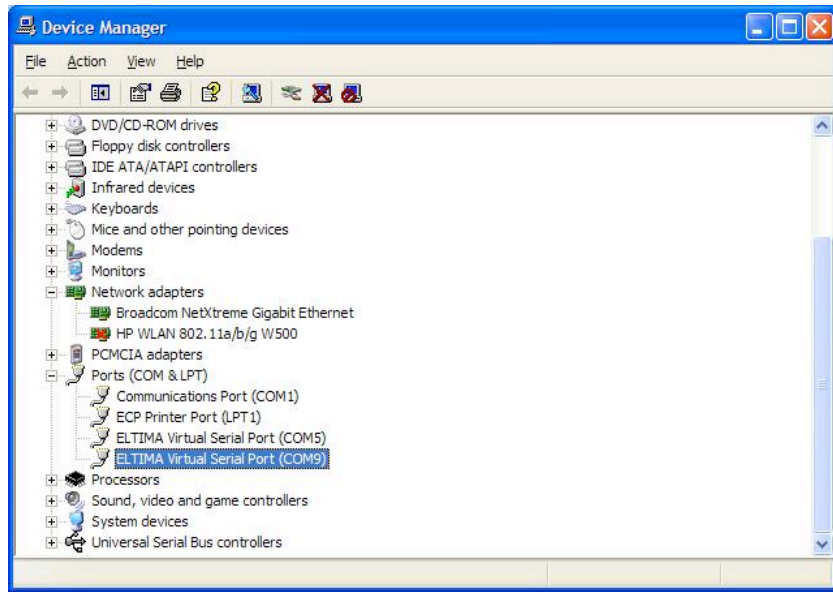
## Setting up Virtual Serial Ports with the **EKM ISERIAL V.2**

1. Run the VCOMSETUP software from the CD. Follow the prompts for installation of the complete package. If reinstalling or updating, it is recommended to do an uninstall, then an install. Re-boot if prompted to do so.
2. Connect the iSerial to your LAN.
3. Run the VCOM software
4. Click on the "Search Device" tab and then the "Search Device" button. The EKM iSerial should show up as a device, and its IP address should show in "Device Information"
5. Click on the VCOM tab.
6. Choose either TCP or UDP
7. Select an available COM Port from the drop-down list.
8. Click "Client"
9. Enter the iSerial IP address (default is 192.168.1.125)
10. Enter the iSerial Port Number (default is 50000) in the "Remote Port" field
11. Click "Create Port"

Leave the VCOM software running. Once you open the serial port you've created, your window should look like this:



Checking in Device Manager, you should see the serial port as an available port:



If your serial device software allows the choosing of COM ports, choose the virtual port you created, and you should be able to communicate with your device if it is connected to the **EKM ISERIAL**.